

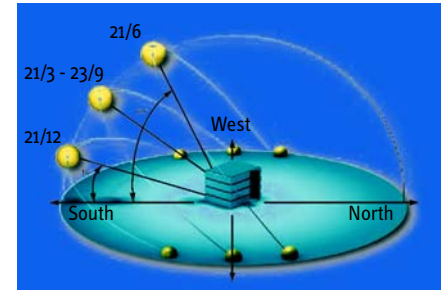
ombra BST - on the sunny side with sun tracking control!

The e.control sun tracking system perfectly combines the contradictory demands for glare-free work and the use of daylight. The ombra BST slat angle control is the core piece which has been developed in cooperation with the Gelsenkirchen* Polytechnic. It knows the exact position of the sun every single day of the year and at all times and is thus in a position to adapt the blinds of a building ideally to suit the position of the sun. In this way maximum daylight is ensured without the sun's rays being able to enter the room directly. The additional brightness that may be required can be obtained through an e.control constant light control by adding artificial light. The advantages of sun tracking are obvious:

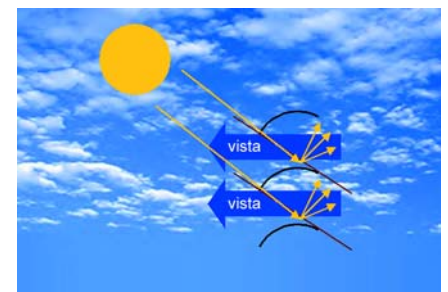
- maximum use of daylight
- reduced room heating
- reliable glare protection.

Since all e.control blind actuators are suitable for sun tracking, it is sufficient to equip the building with the ombra BST slat angle control system. Based on the outside brightness, which is provided by the ombra W8 sensor unit, this device decides whether antiglare protection is required on a façade or whether the blinds remain in a definable waiting position – and that for a maximum of 15 independent façades and/or blind types. ombra BST thus also works for highly exacting building geometries, such as oblong or round layouts.

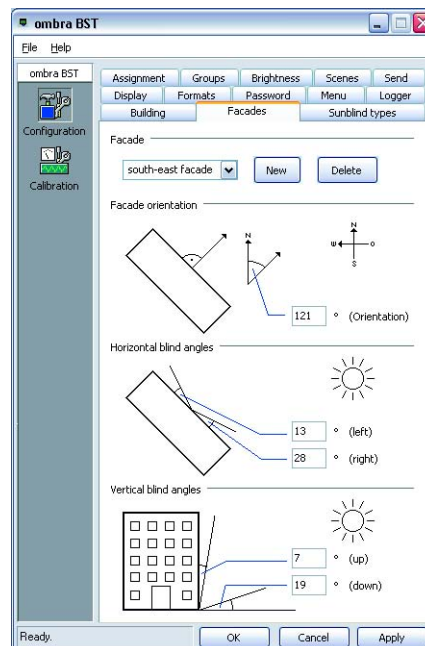
For buildings surrounded by other buildings, there is also the possibility of annual shading-dependent control. This makes sure that only those slats which are actually in the sun are moved into position. Blinds which are in the shadow of surrounding buildings move the slats to a fully horizontal position to enable an unobstructed view. To implement this, the e.control annual shading-dependent control plug-in is required which in turn needs the geometric data of the shadow-producing buildings and the dimensions and position of its own windows. On this basis, it creates a shading diagram for each window or group of windows and stores the data in the actuators. Since all e.control actuators can process the data in the table, no additional hardware is required.



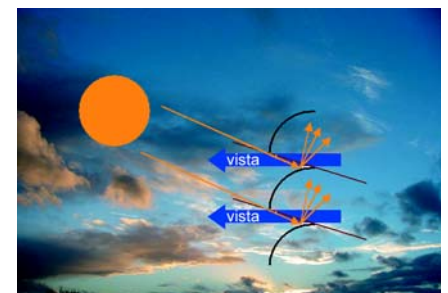
ombra BST knows the exact position of the sun at all time and every day.



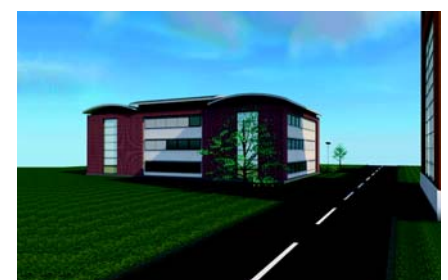
Flat slat angles at noon ensure unobstructed view without the sun's rays directly entering the room.



This is something which only e.control offers: Sun tracking and annual shading-dependent control can be configured step-by-step by the system integrator with easy-to-use plug-ins.



The low sun position in the morning and evenings requires steeper slat angles. ombra BST nevertheless enables an unobstructed view.



Surrounding shadow-producing buildings are dealt with by the annual shading-dependent control, i.e. the slats are positioned to enable an unobstructed view.

graphics by ventus GmbH - www.ventus-consult.de